



The Finest Professional Car Care Products Made



"Try It Once.. Use It Forever!"

HISTORY

Gliptone Manufacturing Inc. established in 1947, is a trusted chemical manufacturer with over 600 active formulations targeting the automotive and transportation industry. Since its inception, Gliptone has been a trailblazer of the revolution in car care products across the world cleaning and protecting interior and exterior surfaces with best in class products and processes that has been our expertise for over 75 years. It has stood the test of time as the world leader in manufacturing premium quality products. From concept to development, to production, Gliptone Products have delivered the very best industry performance using high quality ingredients at a relatively low cost.

Gliptone products have been built to protect cars, bikes, trucks, buses, boats and locomotives from some of the harshest existing elements and weather conditions on the planet including scorching hot summer sun to snow filled freezing winters. From city pollution and industry generated airborne pollutants to the sand & salt filled forceful winds. Gliptone's offering includes a full line of Professional Automotive Reconditioning Products, Marine/RV Products, World Class Leather Care Products, High Tech Polymer Sealants and Polysilazane Coatings & Gliptone's Professional Car Wash Tunnel Chemicals.

WHY GLIPTONE?

- Trailblazing the revolution in car care industry across the world by developing Ultimate Quality Products since 1947
- Offering includes a full line of premium professional automotive Reconditioning Products & Retail Car Care Products
- Our products are built to protect automobiles from some of the harshest existing elements & weather conditions
- From soaps & degreasers, world class leather products to CARNAUBA based waxes, or high tech Polymer sealants & ceramic coatings, Gliptone's emphasis on quality shines through
- We encourage car enthusiasts and detailers to improve their skills and pursue personal and team growth through training and hands on experience
- Training and end-user support have been the cornerstone of gliptone's success since the beginning
- We don't allow ourselves to become distracted with product trends that may be considered 'trendy' unless we are confident that they make a solid contribution to improved results!
- A secret this good cannot be kept; so, give us a try and remember: "try it once, use it forever" that's been our motto since 1947



SCAN
TO VISIT OUR SITE

CONTENTS

PRODUCTS

PAGES

SHAMPOOS, CLEANERS & SOLVENTS	1 - 12
COMPOUNDS, GLAZE & POLISHES	13 - 21
LEATHER CARE	22
DRESSING & GLASS TREATMENT	23 - 28
FOAM BLIZZARD	29
METAL POLISHES	30
BODY PREP	31
HEADLIGHT RESTORATION	32
BRUSHES & TOOLS	33
MULTI-PURPOSE SPONGE	34
PADS-DA & ORBITAL	35
TOWELS	36 - 38
GT QUARTZ	39 - 40

BUBBLES - CAR WASH CONCENTRATE

A 100% Biodegradable, high sudsing and gentle cleaning soap. The formula will safely emulsify grease and oil deposits, floating dirt away from paint with special lubricants to prevent scratching. Dilution ratio - 125:1

For better results : Use with GLIPTONE WASHMITT GT560

1 100% Biodegradable

2 Spot Free Rinsing

3 High Sudsing Formula



GT430-01
1 Ltr



GT430-02
2 Ltrs



GT430-05
5 Ltrs

EASY SUDS & SHINE - ULTRA SUDSING CAR SOAP

An ultra sudsing soap with built-in optical brighteners. Premium lubricity, safely floats away grime and soil leaving a bright clean surface. Fresh lemon scent. Dilution ratio - 75:1

For better results : Use with GLIPTONE WASHMITT GT560

1 100% Biodegradable

2 Spot Free Rinsing

3 pH Balanced



GT435-05
5 Ltrs



GT435-02
2 Ltrs



GT435-01
1 Ltr



WASH & SHINE - CAR SOAP

An ultra sudsing soap with built-in gloss enhancers. Premium lubricity, safely floats away grime and soil leaving a bright clean surface. High foaming action and exotic fruit fragrance combine to make this product ideal for hand car wash businesses. The foaming and fragrance features can be further enhanced when dispensed through a foam gun.

For better results : Use with GLIPTONE WASHMITT GT560

1 Gloss Enhancer

2 Leaves A Bright Surface

3 pH Neutral Formula



GT456-01
1 Ltr



GT456-02
2 Ltrs



GT456-05
5 Ltrs

FOAMY HD - UPHOLSTERY SHAMPOO

A concentrated, high foaming, heavy duty cleaner with optical brighteners. Designed to dissolve and lift the toughest dirt and grease. Recommended for all synthetic carpets, upholstery, vinyl and leather. Not recommended for use in extraction equipment. Fresh apple scent.

For better results : Use HARDWOOD ECO HAND BRUSH GT295

1

Heavy Duty Cleaner

2

High Foaming Formula

3

Dissolves Toughest Dirt



GT408-05
5 Ltrs



GT408-01
1 Ltr



MAGTASTIK™ PLUS WITH RIMGUARD

Safely and effectively removes brake dust, road grime and surface dust while leaving a heat resistant polymer coating protection that protects against future soil build up.

1 Polymer Coating

2 Effectively Cleans

3 Ultimate Protection



GT150-01
1 Ltr



GT150-05
5 Ltrs

GT IRON EATER®

A fast acting, pH Neutral gel formula that clings to surfaces providing added dwell time and exceptional cleaning action. The pH neutral formulation makes this product a much safer alternative then acid-based wheel cleaners and surface contaminant removers. Gliptone's first priority when developing this product was to bring a safe, powerful, and cost effective solution with the lowest degree of odor possible. The colour indicator is an added touch that helps visualize the cleaning action process on car paint, glass, plastic and vinyl. Also safe on chrome & aluminium.

For better results : Use GLIPTONE SOFTOUCH® MICROFIBER TOWEL GT71666

1 Highly Effective

2 Indicates with Red Colour

3 pH Neutral



GT169-05
5 Ltrs



GT169-01
1 Ltr



ENGINE WASH - CONCENTRATE

A water-base multipurpose cleaner/degreaser. Cuts heavy grease and soil on engines, shop machinery, tools, garage floors, printing equipment, bicycles, garden and farm equipment. Dilute 50:50 for heavy duty degreasing or up to 10:1 for interiors. Will not stain painted surfaces.

For better results : Use GLIPTONE SOFTOUCH® MICROFIBER TOWEL GT71666

- 1 Water Based Formula
- 2 Fast Cleaning/Degreasing
- 3 Remove Greases & Oils



GT135-01
1 Ltr



GT135-05
5 Ltrs

ULTRA CLEANER - CONCENTRATE

A multi-purpose highly effective cleaner and disinfectant for most interior and exterior applications. Effective against all type of germs and viruses. Non caustic and Meets EPA Standards. Effective in cleaning oils / grease, food grease, scuff marks, crayon markings from any surface.

For better results : Use GLIPTONE SOFTOUCH® MICROFIBER TOWEL GT71666

- 1 Highly Effective Cleaner
- 2 Non - Greasy Formula
- 3 Meets EPA Standards



GT138-05
5 Ltrs



GT138-01
1 Ltr



INTERIOR WASH

Effectively cleans and brightens vinyl, leather, carpeting and upholstery. Leaves surface clean and free of residue. Safe on all surfaces. Will not fade colour or remove natural oils present in leather when used as directed.

For better results : Use HARDWOOD ECO HAND BRUSH GT295

1 Spot Free Rinsing

2 Highly Concentrated Formula

3 Safe on All Surfaces



GT420-01
1 Ltr



GT420-05
5 Ltrs

BIO-ZYME - ENZYME CLEANER & DEODORIZER

A synergistic blend of bacterial enzymes which break down fats, grease and oils. Eliminates odors naturally. Cleans stains and odors from carpets and fabrics caused by urine, faeces, blood, wine, coffee, and vomit. Non-pathogenic. Leaves fresh clean fragrance. Dilutable as much as 20:1 for maximum economy .

For better results : Use GLIPTONE SOFTOUCH® MICROFIBER TOWEL GT71666

- 1 Cleans Toughest Stains
- 2 Leaves a Fresh Fragrance
- 3 Non-Pathogenic



GT125-05
5 Ltrs



GT125-01
1 Ltr

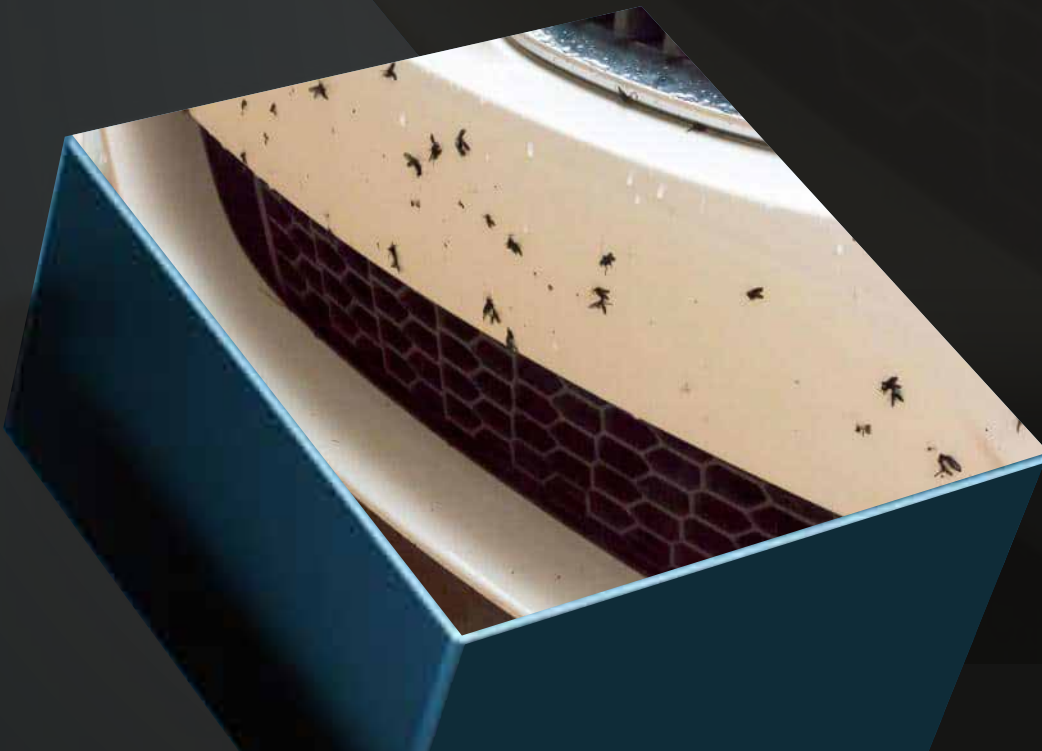


TAR & BUG REMOVER

Provides excellent and immediate results on fresh and dried-on sap, tar, and bug residue. Specifically formulated to quickly penetrate and remove bug residue without causing any damage to paint, glass, plastic and chrome surface.

For better results : Use GLIPTONE SOFTOUCH® MICROFIBER TOWEL GT71666

- 1 Special Formula
- 2 Excellent Cleaning
- 3 Works well on All Surfaces



GT127-01
1 Ltr



GT127-05
5 Ltrs

QUICK-SEAL - EASY ON, EASY OFF WAX

An ultra fast water thin "shake-up" wax that removes tar and glue residue while leaving a glossy wax finish. Goes on quick, dries quick, and wipes off just as easy. This non-dusting formula is ideal for new car prep or regular vehicle maintenance.

For better results : Use GLIPTONE SOFTOUCH® MICROFIBER TOWEL GT71666

- 1 Non Dusting Formula
- 2 Easy Application
- 3 Effectively Removes Residue



GT271-05
5 Ltrs



GT271-01
1 Ltr



POWER BUFF - SILICONE FREE HEAVY DUTY COMPOUND

A solvent based, silicone free compound that will remove heavy scratches (1000 or finer grits), paint defects and oxidation. Power Buff will restore clear coats or conventional paints to their original high gloss finish. This traditional cutting formula represents our strongest cutting compound. Body shop safe. Recommended for use with variable speed polisher using foam or wool pads.

For better results : Use with GLIPTONE FOAM/WOOL PADS

1 Silicone Free Compound

2 Removes Heavy Scratches

3 Restores Clear Coats



GT222-05
5 Ltrs



GT222-01
1 Ltr



GT222-50
500 ML



EXTREME BUFF CLEAR

**EXTREME BUFF CLEAR - WATER BASED, SILICONE FREE, HEAVY DUTY LIQUID COMPOUND**

A water based, silicone free compound that will remove extra heavy scratches (1200 or finer grit), paint defects and oxidation. Using synthetic abrasive technology, Extreme Buff Clear will restore clear coats to their original high gloss finish without "scouring" and "swirling" the finish. Can be used by hand, orbital buffer, or variable speed polisher with foam or wool pads.

For better results : Use with GLIPTONE FOAM/WOOL PADS

1 Silicone Free Compound

2 High Gloss Finish

3 Restores Clear Coats



GT221-50
500 ML



GT221-01
1 Ltr



GT221-05
5 Ltrs

PERFECT COMPOUND - SILICONE FREE HEAVY DUTY COMPOUND

A solvent based, silicone free compound that combines traditional cutting abrasives and synthetic, leveling technology. Removes moderate to heavy scratches (1000 or finer grit), paint defects and oxidation. Perfect compound will restore clear coats to their original high gloss finish. Can be used by hand, orbital buffer or variable speed polisher with foam or wool pads. Similar to Power Buff but milder.

For better results : Use with GLIPTONE FOAM/WOOL PADS

1 High Gloss Finish

2 Silicone Free Formula

3 Restores Clear Coats



GT223-05
5 Ltrs



GT223-01
1 Ltr



GT223-50
500 ML



PRECISION SERIES

**PRECISION CUT HD**

Nano Ceramic Abrasive Technology Precision Cut HD effectively removes 1500+ grit sand marks from fresh and factory cured paint. Extremely effective in paint correction process for removing heavy scratching, paint defects and oxidation. Excellent results are achieved by rotary buffer or dual action polisher. Engineered for use with wool, foam or microfiber pads. Only a small amount of product is required to achieve outstanding results.

For better results : Use with GLIPTONE FOAM/WOOL PADS

1 Excellent Results in Small Amount

2 Easy to Use & Clean

3 Body Shop Safe



GT230-50
500 ML

GT230-01
1 Ltr

GT230-05
5 Ltrs

PRECISION CUT

Nano Ceramic Abrasive Technology Precision Cut effectively removes 1500+ grit sand marks or finer from fresh and factory cured paints. Extremely effective in paint correction process for removing heavy scratching, paint defects and oxidation. Excellent results are achieved by rotary buffer or dual action polisher. Engineered for use with wool, foam or microfiber pads. Only a small amount of product is required to achieve outstanding results.

For better results : Use with GLIPTONE FOAM/WOOL PADS

1 Excellent Results in Small Amount

2 Effective in Paint Correction

3 Body Shop Safe



GT234-50
500 ML

GT234-01
1 Ltr

GT234-05
5 Ltrs

PRECISION CUT FINISH

Nano Ceramic Abrasive Technology Precision Finish contains no fillers and effectively removes, not hides, micro fine scratches, swirls and holograms. The perfect paint correction finish step to produce flawless perfection and paint clarity. For use with foam or microfiber pads and DA polisher. Also very effective with rotary at low speed with finishing foam.

For better results : Use with GLIPTONE RED FINISHING PAD GT9521

1 Excellent Workability

2 Produces Flawless Protection

3 Contains No Fillers



GT246-50
500 ML

GT246-01
1 Ltr

GT246-05
5 Ltrs

STAGE 2 GLAZE - CLEAR COAT CLEANER POLISH

An easy to use, non abrasive "second step" polish that produces a high gloss, durable finish on today's clear coat and conventional paints. Use Stage 1 prior for a simple 2 step system. Can be used with hand, orbital buffer, or variable speed polisher using a soft finishing foam or wool pad.

For better results : Use with GLIPTONE FOAM/WOOL PADS

1 Easy To Use

2 Non-Abrasive Formula

3 High Gloss Finish



GT278-50
500 ML



GT278-01
1 Ltr



GT278-05
5 Ltrs

CHERRY BOMB - MILD POLISH WAX

Leaves a durable showroom finish on new or used paint. Non streak, easy to use formula. Recommended for hand or machine use with foam pad. Features a mild cherry aroma.

For better results : Use with GLIPTONE FOAM PADS

1 Quickly Removes Fine Scratches

2 Wet Look Shine

3 Leaves a Showroom Finish



GT280-05
5 Ltrs



GT280-01
1 Ltr



GT280-50
500 ML



YELLOW CREAM WAX - LIGHT DUTY FINISHING WAX

Leaves a showroom finish on new or used paint. Restores colour and gloss to all finishes. Contains Carnauba and detergent resistant polymers for a durable "wet look" shine. Hand or machine use. Easy-to-use formula. Excellent choice for use in an express wax service.

For better results : Use with GLIPTONE FOAM PADS

1 Leaves a Showroom Finish

2 Restore Colour & Gloss

3 Gives "Wet Look" Shine



GT288-50
500 ML



GT288-01
1 Ltr



GT288-05
5 Ltrs



PLATINUM SERIES CREAM WAX

The Gliptone Platinum Series Cream Wax is a modern protective wax coating designed for the automobile enthusiast who demands uncompromising quality. It's a long-lasting formula that outlasts conventional waxes. Gliptone Platinum Series Cream Wax fills in buffing swirls and hairline scratches, forms a non-stick barrier to guard against harmful elements, and produces a deep shine while providing protection against acid rain and harmful detergents. Super easy to apply and remove and is clear coat safe.

1 Resists Harmful Elements

2 Advanced Bonding Formula

3 Compatible with All Finishes



GT1016-05
5 Ltrs



GT1016-01
1 Ltr



THE ORIGINAL CARNAUBA PASTE WAX

More wax mileage from a single can than any wax ever made! Original pure wax formula. Made from #1 Brazilian Carnauba. Easy to apply-easy to remove. Provides maximum surface protection. Produces an unequalled, superior shine. Multiple coats magnify painted surface. No yellowing or wax build-up. Will not cause rain spots. Contains no detergents, cleaners, harmful chemicals, synthetics, harsh abrasives or film-forming materials. Will not dull or harm paint finishes. Protects with an application penetrating oils and waxes for a long lasting brilliant shine. Comes with an applicator.

For better results : Use GLIPTONE SOFTOUCH® MICROFIBER TOWEL GT71666

- 1 Pure Brazilian Carnauba Wax
- 2 Maximum Surface Protection
- 3 Contains Highest Carnauba Value



GT0110
10.5 Oz



LEATHER CARE

LEATHER CLEANER

Rated #1 Worldwide Leather Cleaner.. Trusted by Leading Car Manufacturers From Around the World. Gliptone Leather Cleaner loosens and lifts embedded dirt to clean leather safely and thoroughly restoring natural beauty and resiliency. It removes years of dirt and grime to reveal the original beauty and grain of your upholstery and trim without the use of harmful chemicals or water. Preserves leather strength and durability and enhances original new leather scent. pH balanced and will not remove natural leather oils.

For better results :
Use with GLIPTONE HARDWOOD ECO HAND BRUSH GT295

1 Effectively Cleans

2 Enhance Original Leather Scent

3 pH Balanced



GT1201
1 Ltr

GT1205
5 Ltrs

LEATHER CONDITIONER

Rated #1 Worldwide Leather Conditioner. It is specially formulated to preserve the unique, natural qualities and beauty of fine leather. Breathes new life and resilience into neglected leather restoring life and luster. Restores the feel & scent of new leather.

1 Restores, Protects & Preserves

2 Easy-to-use

3 pH Neutral Formula



GT1101
1 Ltr

GT1105
5 Ltrs

GLIPSTIK PEN/STAIN REMOVER

This revolutionary product removes pen, ink scuff marks, crayons, makeup and much more from leather, vinyl and even plastic surfaces. Works instantly and is completely safe on all leather surfaces.

For better results :
Use GLIPTONE SOFTOUCH® MICROFIBER TOWEL GT71666

1 Removes All Types of Hard Pen Marks

2 Compatible with Leather, Vinyl & Plastic

3 Works Instantly & Effectively

GT7118



HYPER SHINE

A highly dilute-able water based dressing that can be diluted as much 4:1. It works great on exteriors, interiors and engine compartments. It has a luscious, fresh grape scent. Extremely economical and versatile. Use on Rubber, Vinyl and Plastic surfaces. Spray or use with sponge applicator.

- 1 Use on Rubber, Vinyl & Plastic Surface
- 2 Suitable for Interior & Engine Compartments
- 3 Dilute to Adjust Shine. Economical & Versatile



GT369-05
5 Ltrs



GT369-01
1 Ltr



FABRIC GUARD

A solvent based, deep penetrating protectant that evaporates quickly leaving an invisible barrier that allows water to bead instead of penetrating within the fabric. Use to treat old or new fabric. Helps with clean up and lengthens fabric life. Thoroughly clean the surface prior to the application. Using mist spray, apply evenly and let it dry for 2 hours.

1 Treat Old/New Fabrics

2 Lengthens Farbric Life

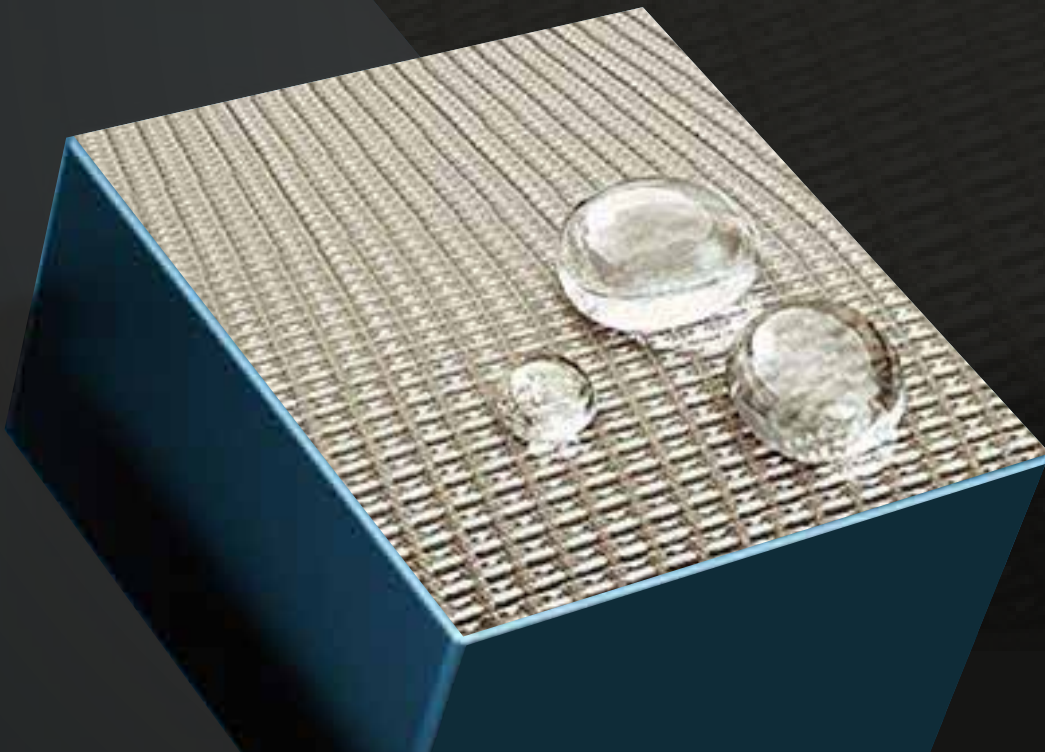
3 Stain Repellent



GT739-01
1 Ltr



GT739-05
5 Ltrs



TRUE BLUE™ PROFESSIONAL TIRE SHINE

A premium professional quality exterior dressing for tires, mouldings, bumpers & vinyl trim. Professional grade shine & durability. Penetrates surface to produce a long-lasting & water repellent shine. On tires apply with a sponge applicator for maximum coverage and effect. Beads water off your tires as if they were waxed. VOC Compliant.

1 Shine & Durability

2 Beads off Water

3 Long Lasting Protection



GT1805
5 Ltrs



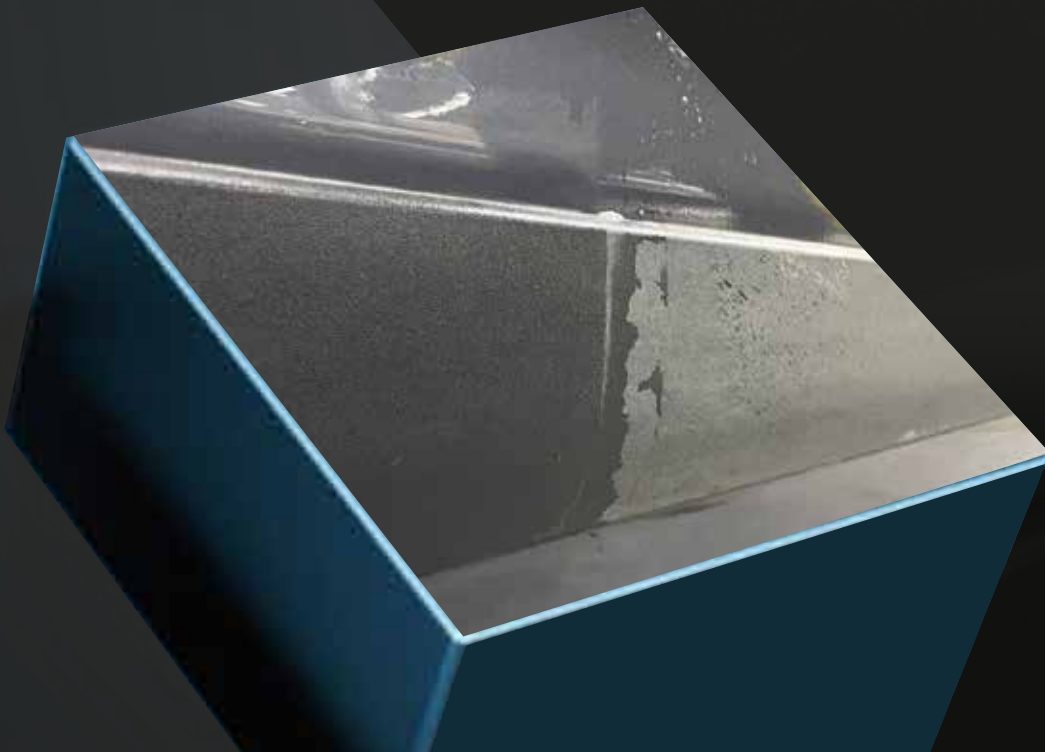
GT1801
1 Ltr



TRIM & TIRE JELLY

Provides the greatest protection and gloss of any tire & trim dressing. Thick, easy-to-apply gel allows for maximum control during application. Will not run or drip. It spreads easily and stays where you put it. Ideal for tires, especially low profile performance tires, because it will not "sling" dressing onto body panels when tires are in motion. Great for exterior trim, rubber and moldings or anywhere a controlled application is desired. Protection and gloss lasts 5 times longer than conventional dressings.

- 1 Easy to Apply
- 2 Gives Glossy Finish to Trim & Tire
- 3 Protection & Gloss Last 5 Times Longer



GT1500-01
1 Ltr



GT1500-05
5 Ltrs

GLASS CLEANER WITH STATIC-X™

A ready-to-use, non-streak formulation that does not require dilution. This Gliptone Glass Cleaner repels dust and debris, helping to keep glass clean longer. Perfect for all glass and hard surface cleaning applications, always delivering premium performance. Will not harm window tint film.

For better results : Use GLIPTONE SOFTOUCH® MICROFIBER TOWEL GT71666

- 1 Streak Free Shine
- 2 Quick Drying Ammonia Free
- 3 Safe For Tinted Windows



GT164-05
5 Ltrs



GT164-01
1 Ltr



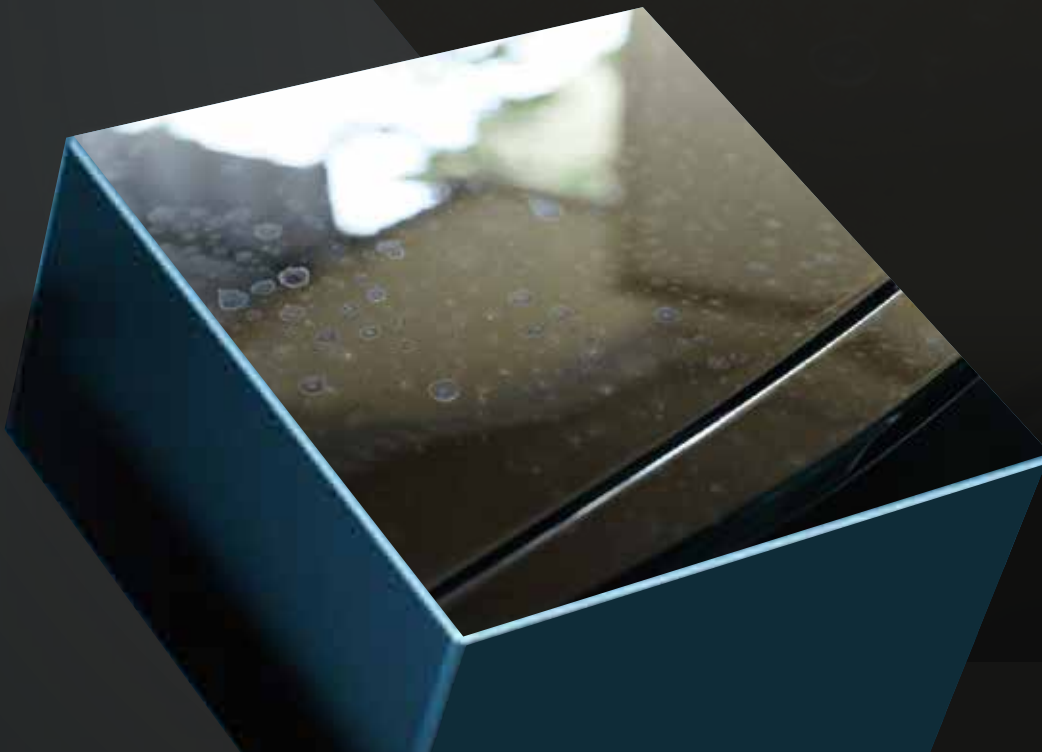
SPOT CHEK™ - GLASS WATER SPOT REMOVER

A unique liquid formula that removes water spot deposits from all types of glass, including automotive glass. Helps restore optical clarity by removing surface debris that has accumulated over time. This product is safe and effective when used as directed. Do not use on car windshields or plastics.

1 Removes Water Spot, Stains & Mineral Deposits

2 Removes Surface Debris

3 Helps Restore Optical Clarity



GT745-01
1 Ltr



GT745-05
5 Ltrs

FOAM BLIZZARD SERIES

FOAM BLIZZARD™**FOAM CANON SOAP**

A specially designed detergent dispenses a uniform "Frothy" layer of foam that is safe on all painted, glass, and plastic trim surfaces. When combined with GLIPTONE's Softouch® Wash Mitt this is a highly effective and gentle cleaning system which can lift and remove most forms of road film and dirt.

For better results : Use with Foam Cannon or Wash Mitt

1 pH Balanced

2 Extreme Foaming

3 Coating & Wax Safe



GT444-05
5 Ltrs

FOAM BLIZZARD PLUS™**FOAM CANON SOAP**

A specially designed detergent with Gloss Enhancers that dispenses a uniform "Frothy" layer of foam that is safe on all painted, glass, and plastic trim surfaces. When combined with GLIPTONE's Softouch® Wash Mitt this is a highly effective and gentle cleaning system which can lift and remove most forms of road film and dirt.

For better results : Use with Foam Cannon or Wash Mitt

1 pH Balanced

2 Highly Concentrated

3 Non-Streak Formula



GT446-05
5 Ltrs

BLIZZARD SHIELD™**FOAM CANON PROTECTIVE**

Blasts on to the target surface with a pleasantly mild froth appearance and pleasant sweet, wax like aroma. BLIZZARD SHIELD™ enhances the surface gloss and speeds the drying process. BLIZZARD SHIELD™ also leaves a residual lasting protection on all hard surface.

For better results : Use with Foam Cannon or Wash Mitt

1 Enhances Gloss

2 Ultra Concentrated

3 Accelerates Drying Time



GT445-05
5 Ltrs

METAL POLISH SERIES

**LIQUID METAL POLISH - FINE**

Ultra Fine Abrasive Grade Metal Polish is recommended for polishing and maintaining smooth lightly oxidized metals. It removes **Light** corrosion, oxidization, tar, rust, stains and tarnish from smooth stainless steel, aluminium, bronze, brass, copper, chrome and can safely be used on solid silver and gold.

For better results :
Use GLIPTONE SOFTOUCH® MICROFIBER TOWEL GT71666

1 Seals & Protects Oils/Waxes

2 Long Lasting Brilliant Shine

3 No Ammonia Or Acid



GT72516
16.0 Oz

LIQUID METAL POLISH - MEDIUM

Medium Abrasive Grade Metal Polish is recommended for polishing and maintaining hard metals like stainless steel, chrome, nickel or magnesium. It will also tackle **Medium** range corrosion, oxidization, tar, rust, stains and tarnish from aluminium, brass, copper and bronze with the greatest of ease.

For better results :
Use GLIPTONE SOFTOUCH® MICROFIBER TOWEL GT71666

1 Seals & Protects Oils/Waxes

2 Long Lasting Brilliant Shine

3 No Ammonia Or Acid



GT72616
16.0 Oz

LIQUID METAL POLISH - COARSE

Coarse Abrasive Grade Metal Polish is recommended for use as a stripping and smoothing agent on rough **Heavily** Oxidized, or corroded non-plated metals. It functions in a similar manner to liquid sandpaper, and should be followed by GLIPTONE's Medium Grade Abrasive Metal Polish or GLIPTONE's Ultra Fine Grade Abrasive Metal Polish to achieve a brilliant shine. DO NOT use on mirror stainless, chrome, nickel or any other plated materials.

For better results :
Use GLIPTONE SOFTOUCH® MICROFIBER TOWEL GT71666

1 Seals & Protects Oils/Waxes

2 Long Lasting Brilliant Shine

3 No Ammonia Or Acid



GT72816
16.0 Oz

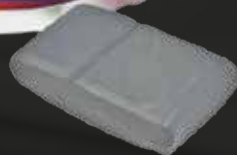
BODY CLAY BAR

Body Clay Bar #1 is for removing contaminants such as: paint overspray, rail dust, bug residue and various airborne pollutants from vehicle surfaces and creating an ultra smooth and clean surface that is ready for wax, polish, and/or paint sealant. This product is the most user friendly "clay type" bar on the market!

- 1 Removes Contaminants
- 2 Deep Cleans The Surface
- 3 Leaves Ultra Smooth Surfaces



GT71110
110gm



BODY LUBE™

Spray lubricant for all "clay-type" products which provides premium gloss and lubricity. Contains No wax, No Silicone and No Harsh Detergent. BODY SHOP SAFE. ; top pick for a clay lube application. It also removes fingerprints, smudges and surface dust while enhancing luster. Perfect for removing residue after buffing. Safe on all paint, vinyl, chrome, plastic and rubber trim surfaces. Excellent for touch up and wipe down maintenance of showroom and collectible cars. Note: Unlike other silicone free, clay lube or detailer-type products, BODY Lube will leave some protection on the surface and remains streak-free even when used in direct sunlight in some of the worlds hottest environments.

For better results : Use GLIPTONE BODY CLAY BAR GT71110

- 1 Spray Lubricant With Gloss Enhancer
- 2 Provides Premium Gloss
- 3 Wax, Silicone & Harmful Detergent Free



GT722-01
1 Ltr



GT722-02
2 Ltrs



GT722-05
5 Ltrs

HEADLIGHT RESTORATION KIT

The chemistry contained in this Gliptone Headlight Restoration Kit is the most innovative in the automotive industry and the GLIPTONE process is without question the most efficient!

The GLIPTONE restoration process does not require you to sand away valuable layers of your headlight lens which can compromise the integrity of the polycarbonate surface. In most other competitive processes you are required to sand through as much as 25% of the lens surface leaving it more susceptible to future damage from stone chips and UV degradation.

The GLIPTONE process starts by chemically removing the outermost discolored and damaged surface while conditioning and priming the surface. Once cleaned and primed the lens receives multiple coats of Gliptone's crystal clear, super hard poly coating that adds considerable strength, clarity and UV protection.

In many cases the GLIPTONE restoration process will restore a lens to a 'better than new' appearance that will last the lifetime of the car!



GT71724



RAZOR SCRAPPER

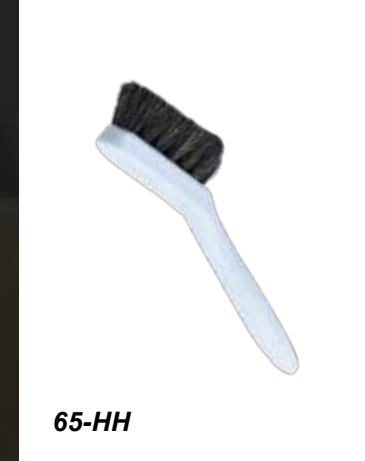
Scrapping tool used to scrap hard gum, glue residue from glass. Removes hardest of residues with ease.

**GTS06*****DETAIL BRUSH - RED CHINA***

1 1/2" wide, nylon handled, red china bristles.

**239*****BRUSH - HORSE HAIR***

Excellent option for use with Gliptone Leather Cleaner on leather and vinyl upholstery.

**65-HH*****HARDWOOD ECO HAND BRUSH***

Lasts 12X longer than a typical brush! Perfect for leather, suede, soft top, textile, plastic and vinyl. • Extreme Durability • Organic Bristles • Super Comfortable Grip • Real Wood • Handcrafted by the best Polish carpenters •

AVAILABLE IN 3 ARTISTIC DESIGN**GT92550**

BRUSH WITH GLIPTONE ARTWORK

GT92560

BRUSH WITH OLD CAR ARTWORK

GT92570

BRUSH WITH SUGAR SKULL ARTWORK

GLIPSCRUB® - MULTIPURPOSE SPONGES

Made from an innovative cleaning material (melamine), the Gliptone Glipscrub® multipurpose cleaning sponge penetrates the surface, removing dirt, oxidation and debris from a wide variety of surfaces including vinyl, plastic, rubber, leather, glass, cloth/fabric and much more. Fixes faded and wax stained molding and trim. Great on door panels, dashboards, interior and exterior trim.

- 1 Door Panels, Dashboards, Interior & Exterior Trim, Glass Cleaning, Wheels
- 2 Fixes Faded & Wax Stained Moldings And Trims
- 3 Made From Melamine

UNITS
 12 SLEEVES



GT910-12



BLACK & WHITE

CUT/POLISH MICROFIBER 6 INCH



BLACK & WHITE

CUT/POLISH MICROFIBER 3 INCH



ALL BLACK

POLISH/FINISH MICROFIBER 5 INCH



ALL BLACK

POLISH/FINISH MICROFIBER 3 INCH



WOOL SOFT

CUT BUFFING 5 INCH



GREEN EXTREME

CUT 5.5 INCH



BURGUNDY MED

CUT 5.5 INCH



ORANGE

HEAVY CUT 5.5 INCH



RED FINISHING

5.5 INCH

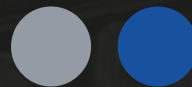


SOFTOUCH® DUAL SIDED MICROFIBER DRY & POLISH

Are produced at a higher "gram weight". This class of SOFTOUCH® Towels weigh in at 360 to 480GSM (Grams per Square Meter). The heavier weight provides a softer, more absorbent, more durable and longer lasting cloth. These towels are dual sided with a plush and microfiber side.

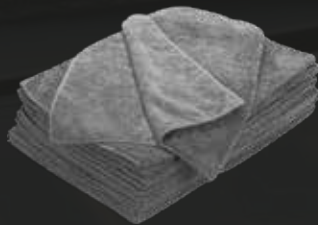
**AVAILABLE IN 2
SIZES**

**AVAILABLE IN 2
COLOURS**



**LARGE SIZE
18X25 IN***

GT71825/12A



**SMALL SIZE
16X16 IN***

GT1620/A



**LARGE SIZE
18X25 IN***

GT71825/12B



**SMALL SIZE
16X16 IN***

GT1620/B



SOFTOUCH® DRYING POLISHING & BUFFING

Are extra large, heavy weight towels that boasts superior streak free, lint free performance. Millions of crevices that collect water, debris and even bacteria make this one of the most absorbent products on earth. Absorbs up to 8 times its weight! Consists of 70% Polyester/ 30% Polyamide.

AVAILABLE IN 3
DIFFERENT COLOURS



AVAILABLE IN 1
SIZE



GT1666-R
16X16 IN*



GT1666-G
16X16 IN*



GT1666-B
16X16 IN*



SOFTOUCH® PREMIUM MICROFIBER WASH MITT

Features a "Heavy Duty waffle weave" finish which is excellent for cleaning and absorption plus they are virtually indestructible. Applications for this towel are endless for cleaning/drying interior, exterior, glass, automotive, household and industrial.



LARGE SIZE
 24X14 IN*
 GT72414

GT560



SOFTOUCH® DRYING/CLEANING WAFFLE MICROFIBER TOWEL

Is machine washable, super soft chenille that provides excellent cleaning action, leaves no lint, streaking or smearing. Safe to use on all delicate surfaces. It traps dust & retains dirt. Tough wrist elastic cuff.

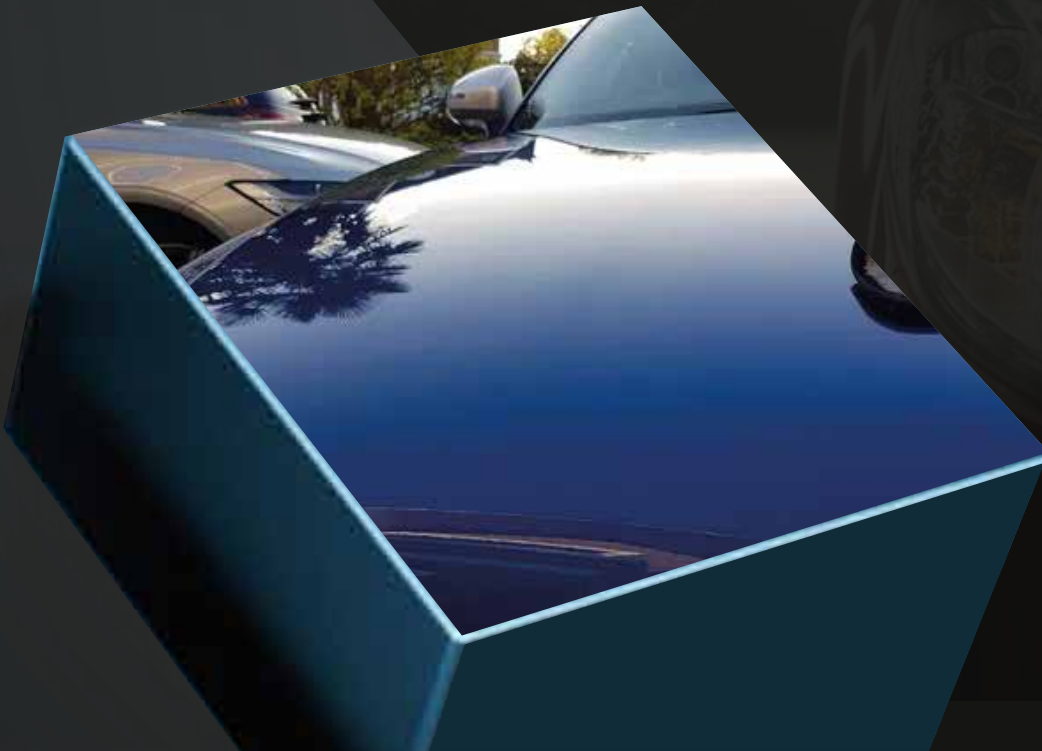


GT EXTENDER

is a SiO₂ Ceramic-based liquid spray coating rejuvenator. This product was specifically designed to enhance and extend the hydrophobic and protection qualities associated with Gliptone's range of GT Quartz coating products. A single treatment on its own provide 2-6 months of protection against UV, detergents, contaminants, and pollution. The treatment is easy to apply and will also aid in restoring that silky feel and extreme depth of gloss.

- 1 Ceramic Based Liquid Spray Creates A Fine Protective Layer
- 2 Made to Protect Car Coating
- 3 Protects From All Types Of Containments, UV and Harmful Detergents

GT4216



GT SURFACE CLENZ®

is a pH-Neutral, non-abrasive, deep cleansing solution that safely and effectively removes lingering, grime, wax and oil residue from paint, glass, metal, vinyl and plastic surfaces. The primary purpose for this product is to prepare the target surface for coating. GT SURFACE CLENZ® goes far beyond what degreasers, isopropyl alcohol and solvent solutions can provide. GT SURFACE CLENZ® provides a perfectly clean, smooth, streak and residue free surface. GT SURFACE CLENZ® also leaves the surface static free, giving you added piece of mind in your efforts to maintain a dust free surface just prior to coating application.

For better results : Use GLIPTONE SOFTOUCH® MICROFIBER TOWEL GT71666

1 pH Neutral Non-Abrasive Solution

2 Prepare The Surface For Coating

3 Residue Free Surface



GT195-05
5 Ltrs



GT195-01
1 Ltrs





The Finest Professional Car Care Products Made



**SIKAND
STANDLEY**
IMPORTER & DISTRIBUTOR



C-151, 1ST FLOOR, NARAINA INDUSTRIAL AREA,
PHASE - 1, NEW DELHI (INDIA) - 110028
EMAIL : INFO@SIKANDSTANDLEY.COM



011- 47100197/198



+91 7838960232



SCAN
TO VISIT OUR SITE

FOLLOW US ON

